



2008-2009 GMT Quarterly Report for District (or Undistricted) **District 19 A**



GMT: **BUSTER D HALL**

Location: **BRITISH COLUMBIA**

GMT CA: **1 & 2**

CLUBS

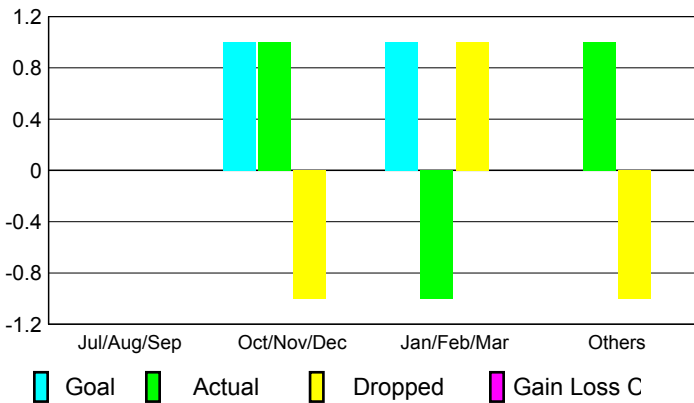
Club Results 2008-2009

Clubs 2007-2008

| Month | New Club Goal | Actual New Clubs | Actual Dropped Clubs | Gain/Loss of Clubs | Gain/Loss of Clubs |
|---------------|---------------|------------------|----------------------|--------------------|--------------------|
| Jul/Aug/Sep | 0 | 0 | 0 | 0 | 2 |
| Oct/Nov/Dec | 1 | 1 | -1 | 0 | 1 |
| Jan/Feb/Mar | 1 | -1 | 1 | 0 | 1 |
| Apr/May/June | 0 | 1 | -1 | 0 | 1 |
| Totals | 2 | 1 | -1 | 0 | 5 |

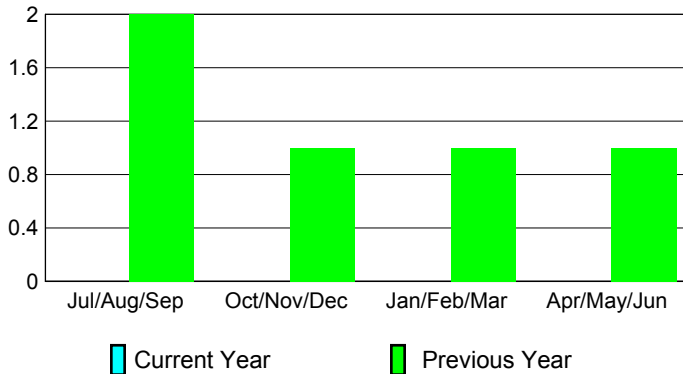
Club Results 2008-2009

Goal, New, Dropped, Gain/Loss



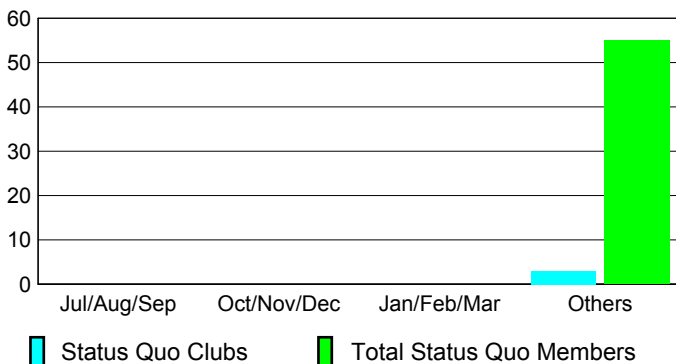
Comparison of Club Gain/Loss

Current Year Compared to the Previous Year



YTD Status Quo Clubs 2008-2009

Status Quo Clubs Compared to Status Quo Members



MEMBERSHIP

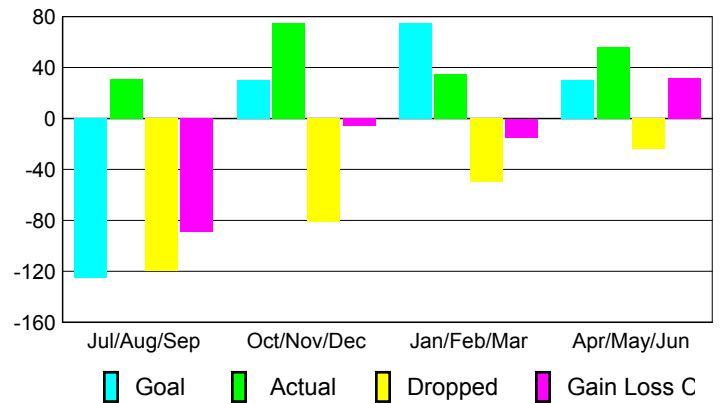
Membership Results 2008-2009

Membership 2007-2008

| Month | Net Memb Goal | Actual New Memb | Actual Dropped Memb | Gain/Loss of Memb | Gain/Loss of Memb |
|---------------|---------------|-----------------|---------------------|-------------------|-------------------|
| Jul/Aug/Sep | -125 | 31 | -120 | -89 | 59 |
| Oct/Nov/Dec | 30 | 75 | -81 | -6 | 30 |
| Jan/Feb/Mar | 75 | 35 | -50 | -15 | 65 |
| Apr/May/June | 30 | 56 | -24 | 32 | 8 |
| Totals | 10 | 197 | -275 | -78 | 162 |

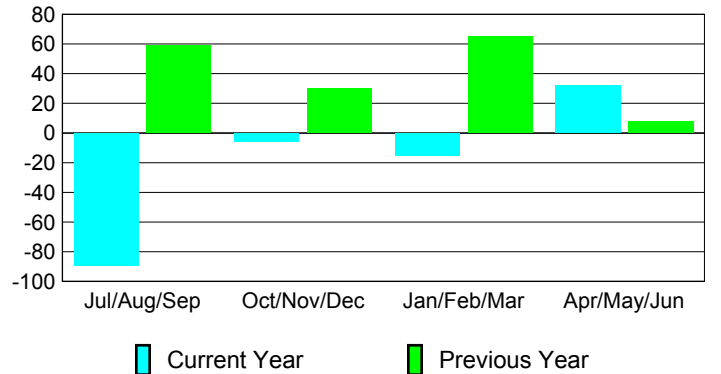
Membership Results 2008-2009

Goal, New, Dropped, Gain/Loss

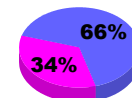


Comparison of Membership Gain/Loss

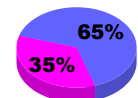
Current Year Compared to the Previous Year



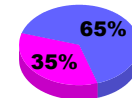
Gender Comparison 2008-2009



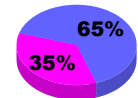
Jul/Aug/Sep



Oct/Nov/Dec



Jan/Feb/Mar



Apr/May/June

Male

Female